

SERIE 4000



Pasaje 5,5 mm

Características

- Anclaje tipo Bayoneta
- Cuerpos totalmente de latón
- Resortes de Acero Inoxidable
- Juntas de Nitrilo (-30°C a 120°C)
- Presión de servicio 16 bars
- Integramente Niquelados
- Pasaje 5,50 mm.

Opciones

- Juntas de:
- Vitón
 - Etileno Propileno
 - Neoprene
 - Silicona

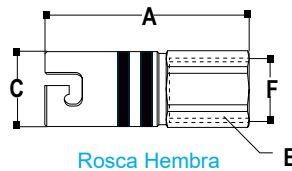
A pedido se construyen en Acero Inoxidable.

Curva de Presión / Caudal

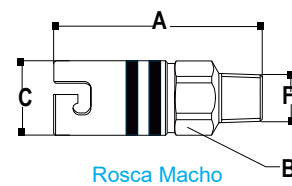


Caudal de aire a 6 Bars: 80 m³/h
(1.328 l/mn)

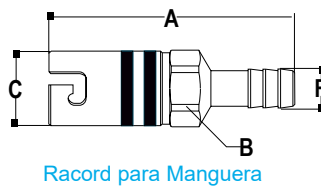
Descripción



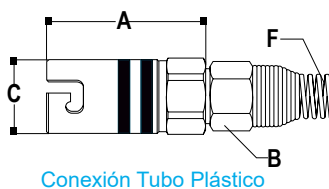
F	Código	A	B	C	F1
1/8 BSP	4101	54.00	3/4"	20.00	
1/4 BSP	4102	54.00	3/4"	20.00	
3/8 BSP	4103	56.00	13/16"	20.00	



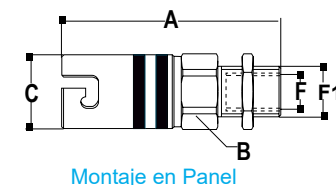
1/8 BSP	4108	54.00	3/4"	20.00	
1/4 BSP	4109	54.00	3/4"	20.00	
3/8 BSP	4110	54.00	3/4"	20.00	



1/4"	4104	65.00	3/4"	20.00	
5/6"	4105	65.00	3/4"	20.00	
3/8"	4106	65.00	3/4"	20.00	
7/16"	4107	65.00	3/4"	20.00	

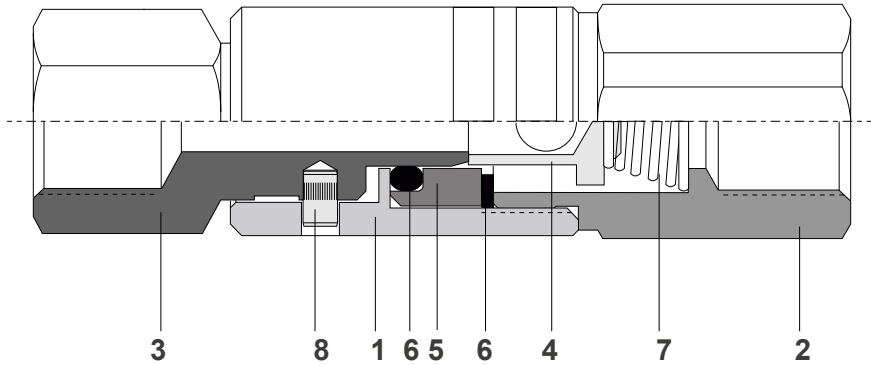


1/4"	4131	43.00	3/4"	20.00	1/4G
5/16"	4132	43.00	3/4"	20.00	
3/8"	4133	43.00	3/4"	20.00	



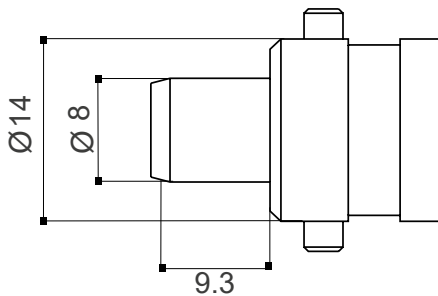
1/8BSP	4150	60.00	3/4"	20.00	1/4G
--------	------	-------	------	-------	------

DATOS TÉCNICOS



- 1- Cuerpo Principal (Latón)
- 2- Cuerpo Inferior (Latón)
- 3- Conector (Latón)
- 4- Válvula (Latón)
- 5- Asiento de Válvula (Latón)
- 6- Sellos (Nitrilo)
- 7- Resorte (Acero Inox.)
- 8- Perno de Anclaje (Acero)

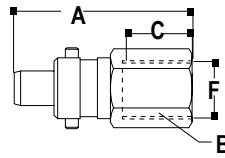
CONECTORES SERIE 4000



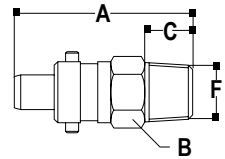
Características

- Anclaje tipo Bayoneta
- Cuerpo de latón
- Integramente niquelados

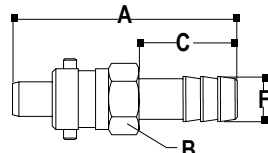
Descripción



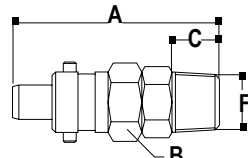
Rosca Hembra



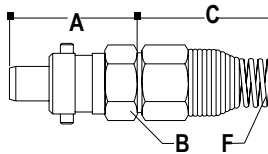
Rosca Macho



Racord para Manguera



Rosca Macho Giratoria



Conexión Tubo Plástico



Reparaciones

Descripción	F	Código	A	B	C	F1
	1/8 BSP	4111	39.00	9/16"	10.00	
	1/4 BSP	4112	39.00	11/16"	12.00	
	3/8 BSP	4113	41.00	13/16"	14.00	
	1/8 BSP	4118	39.00	9/16"	9.00	
	1/4 BSP	4119	40.00	9/16"	12.00	
	3/8 BSP	4120	43.00	11/16"	14.00	
	1/4"	4114	52.00	9/16"	22.00	
	5/6"	4115	52.00	9/16"	22.00	
	3/8"	4116	52.00	9/16"	22.00	
	7/16"	4117	52.00	9/16"	22.00	
	1/4BSPT	4160	48.00	9/16"	12.00	
	1/4"	4155	30.00	9/16"	92.00	
	5/16"	4156	30.00	9/16"	98.00	
	3/8"	4157	30.00	11/16"	110.00	
	vitón	4124				
	nitrilo	4125				