

SERIE 5700



Pasaje 8,0 mm

Características

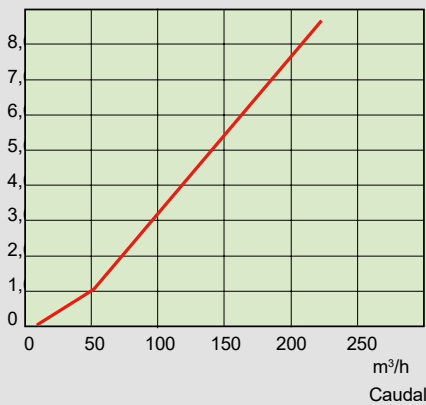
- Cuerpo de bronce niquelado
- Buje móvil de acero zincado
- Resortes y bolillas de acero inoxidable
- Juntas de Nitrilo (-30°C a 120°C)
- Presión de servicio 20 bars
- Acoplamiento automático
- Pasaje 8,00 mm.

Opciones

- Juntas de:
- Vitón
  - Etileno Propileno
  - Neoprene
  - Silicona

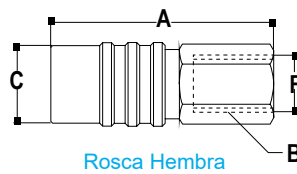
Curva de Presión / Caudal

Presión de entrada



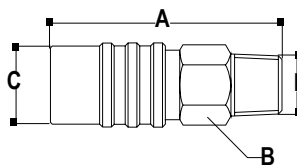
Caudal de aire a 6 Bars: 160 m<sup>3</sup>/h  
(2.656 l/mn)

Descripción



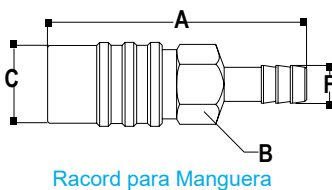
Rosca Hembra

F	Código	A	B	C	F1
1/4 BSP	<b>5702</b>	65.00	7/8"	27.00	
3/8 BSP	<b>5703</b>	67.00	7/8"	27.00	
1/2 BSP	<b>5704</b>	72.00	1"	27.00	



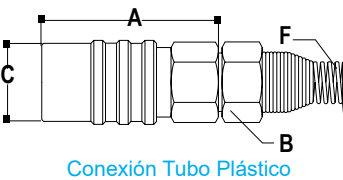
Rosca Macho

1/4 BSPT	<b>5707</b>	65.00	7/8"	27.00	
3/8 BSPT	<b>5708</b>	67.00	7/8"	27.00	
1/2 BSPT	<b>5709</b>	69.00	7/8"	27.00	



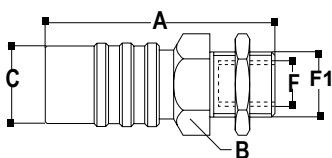
Racord para Manguera

3/8"	<b>5713</b>	76.00	7/8"	27.00	
7/16"	<b>5714</b>	76.00	7/8"	27.00	
1/2"	<b>5715</b>	76.00	7/8"	27.00	



Conexión Tubo Plástico

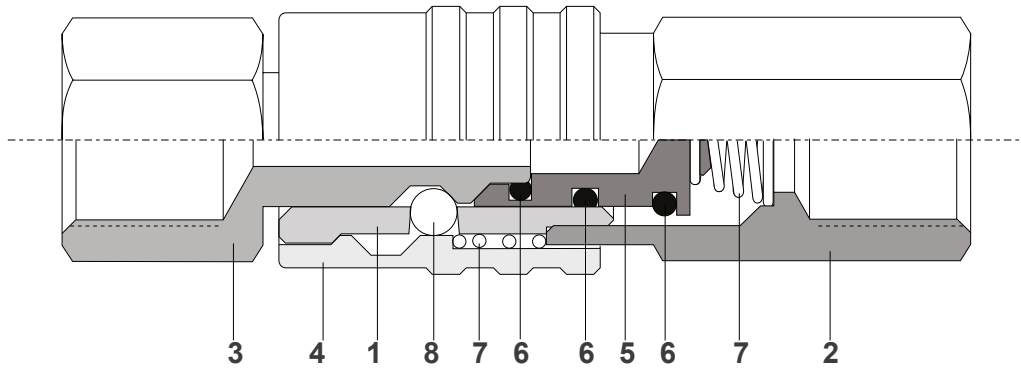
3/8"	<b>5720</b>	53.00	7/8"	27.00	
1/2"	<b>5721</b>	53.00	7/8"	27.00	



Montaje en Panel

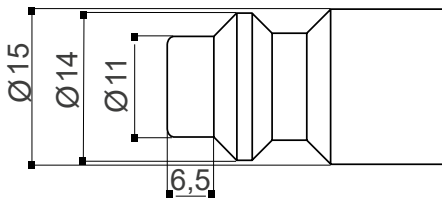
3/8 BSP	<b>5724</b>	70.00	1" 1/8	27.00	M20
---------	-------------	-------	--------	-------	-----

DATOS TÉCNICOS



- |  |   |
|--|---|
| 1- Cuerpo Principal (Latón niquelado)              | 5- Válvula (Acero tratado termicamente y zincado) |
| 2- Cuerpo Inferior (Latón niquelado)               | 6- Sellos (Nitrilo)                               |
| 3- Conector (Acero tratado termicamente y zincado) | 7- Resortes (Acero inoxidable)                    |
| 4- Buje Móvil (Acero zincado)                      | 8- Bolillas (Acero inoxidable)                    |

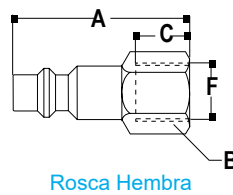
CONECTORES SERIE 5700



Características

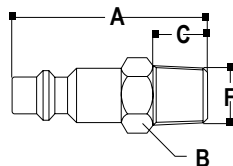
- Acero zincado anticorrosivo
- Tratados termicamente
- Alta resistencia al uso

Descripción



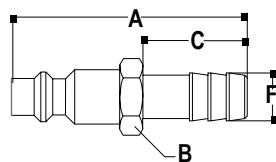
Rosca Hembra

F	Código	A	B	C	F1
1/4 BSP	<b>5727</b>	43.00	5/8"	12.00	
3/8 BSP	<b>5728</b>	46.00	13/16"	14.00	
1/2 BSP	<b>5729</b>	48.00	1"	16.00	



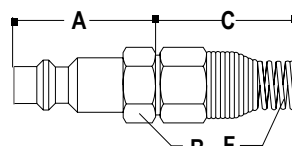
Rosca Macho

1/4 BSPT	<b>5731</b>	48.00	5/8"	12.00	
3/8 BSPT	<b>5732</b>	50.00	11/16"	14.00	
1/2 BSPT	<b>5733</b>	51.00	7/8"	15.00	



Racord para Manguera

5/16"	<b>5736</b>	57.00	5/8"	22.00	
3/8"	<b>5737</b>	57.00	5/8"	22.00	
7/16"	<b>5738</b>	57.00	5/8"	22.00	
1/2"	<b>5739</b>	57.00	5/8"	22.00	



Conexión Tubo Plástico

3/8"	<b>5744</b>	36.00	11/16"	120.00	
1/2"	<b>5745</b>	36.00	13/16"	150.00	