

SERIE 5900



Pasaje 12,0 mm

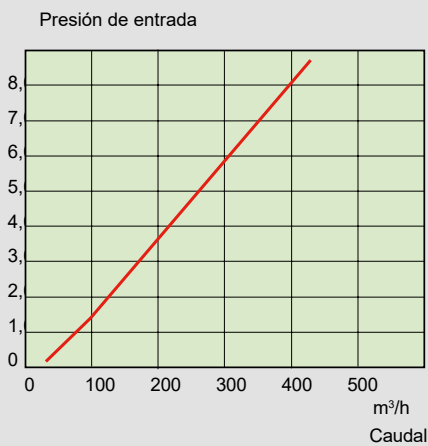
Características

- Cuerpo de bronce niquelado
- Bujes móviles de acero zincado
- Resortes y bolillas de acero inoxidable
- Juntas de Nitrilo (-30°C a 120°C)
- Presión de servicio 20 bars
- Acoplamiento automático
- Pasaje 12,00 mm.

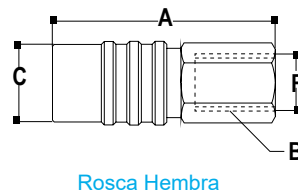
Opciones

- Juntas de:
- Vitón
 - Etileno Propileno
 - Neoprene
 - Silicona

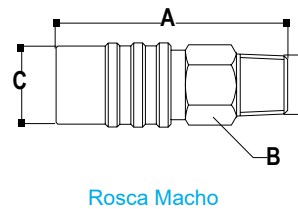
Curva de Presión / Caudal



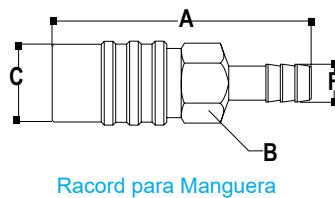
Descripción



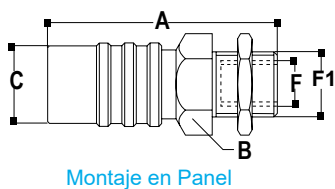
F	Código	A	B	C	F1
1/2 BSP	5904	76.00	1"1/4	36.00	
3/4 BSP	5905	80.00	1"1/4	36.00	



1/2 BSPT	5909	77.00	1"1/4	36.00	
3/4 BSPT	5910	80.00	1"1/4	36.00	

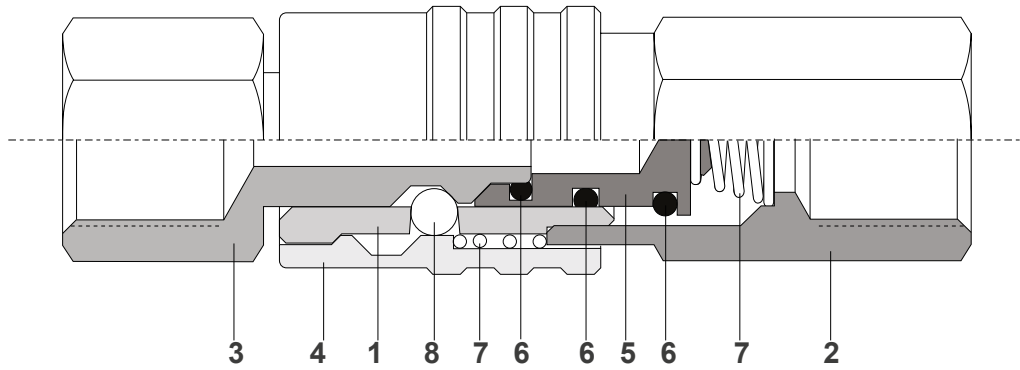


1/2"	5915	89.00	1"1/4	36.00	
5/8"	5916	89.00	1"1/4	36.00	
3/4"	5917	89.00	1"1/4	36.00	



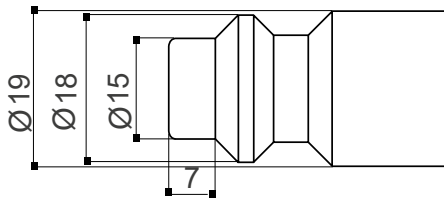
1/2 BSP	5925	82.00	1" 1/4	36.00	M26
---------	-------------	-------	--------	-------	-----

DATOS TÉCNICOS



- | | |
|--|---|
| 1- Cuerpo Principal (Latón niquelado) | 5- Válvula (Acero tratado termicamente y zincado) |
| 2- Cuerpo Inferior (Latón niquelado) | 6- Sellos (Nitrilo) |
| 3- Conector (Acero tratado termicamente y zincado) | 7- Resortes (Acero inoxidable) |
| 4- Buje Móvil (Acero zincado) | 8- Bolillas (Acero inoxidable) |

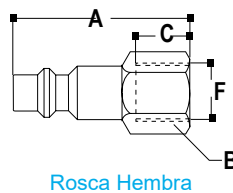
CONECTORES SERIE 5900



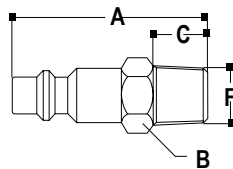
Características

- Acero zincado anticorrosivo
- Tratados termicamente
- Alta resistencia al uso

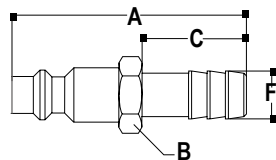
Descripción



Rosca Hembra



Rosca Macho



Racord para Manguera

Descripción	F	Código	A	B	C	F1
Rosca Hembra	3/8 BSP	5928	52.00	5/8"	14.00	
	1/2 BSP	5929	52.00	13/16"	16.00	
	3/4 BSP	5930	55.00	1"	19.00	
Rosca Macho	3/8 BSPT	5932	58.00	3/4"	14.00	
	1/2 BSPT	5933	60.00	7/8"	16.00	
	3/4 BSPT	5934	62.00	1"1/18	18.00	
Racord para Manguera	1/2"	5939	71.00	3/4"	28.00	
	5/8"	5940	71.00	3/4"	28.00	
	3/4"	5941	71.00	13/16"	28.00	