

SERIE 8000



Pasaje 5,5 mm

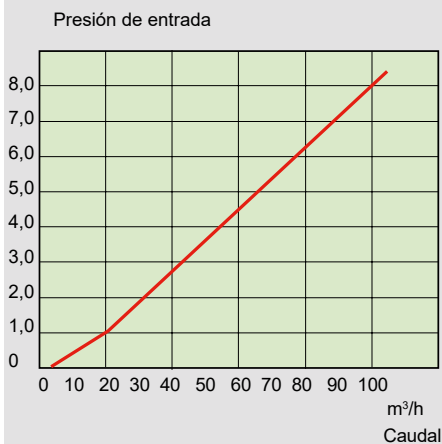
Características

- Cuerpo de bronce niquelado
- Buje móvil de acero zincado
- Resortes y bolillas de acero inoxidable
- Juntas de Nitrilo (-30°C a 120°C)
- Presión de servicio 20 bars
- Acoplamiento automático
- Pasaje 5,50 mm.
- Compatibles con: ARO 210 STD

Opciones

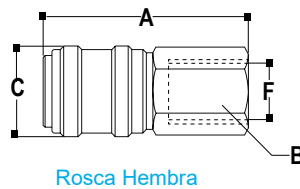
- Juntas de:
- Vitón
 - Etileno Propileno
 - Neoprene
 - Silicona

Curva de Presión / Caudal

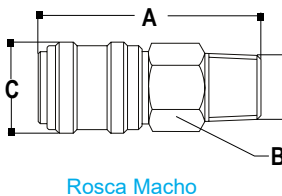


Caudal de aire a 6 Bars: 75 m³/h
(1.245 l/mn)

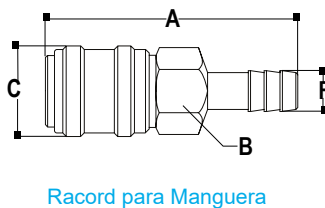
Descripción



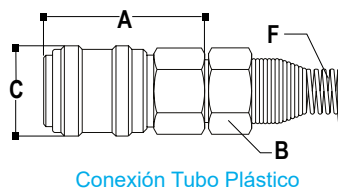
F	Código	A	B	C	F1
1/8 BSP	8201	57.00	13/16"	25.00	
1/4 BSP	8202	57.00	13/16"	25.00	
3/8 BSP	8203	59.00	13/16"	25.00	



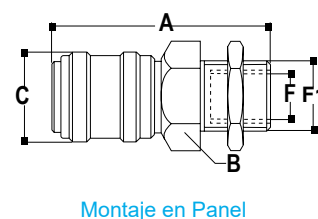
1/8 BSPT	8208	53.00	13/16"	25.00	
1/4 BSPT	8209	56.00	13/16"	25.00	
3/8 BSPT	8210	58.00	13/16"	25.00	



1/4"	8204	67.00	13/16"	25.00	
5/16"	8205	67.00	13/16"	25.00	
3/8"	8206	67.00	13/16"	25.00	
1/2"	8207	67.00	13/16"	25.00	

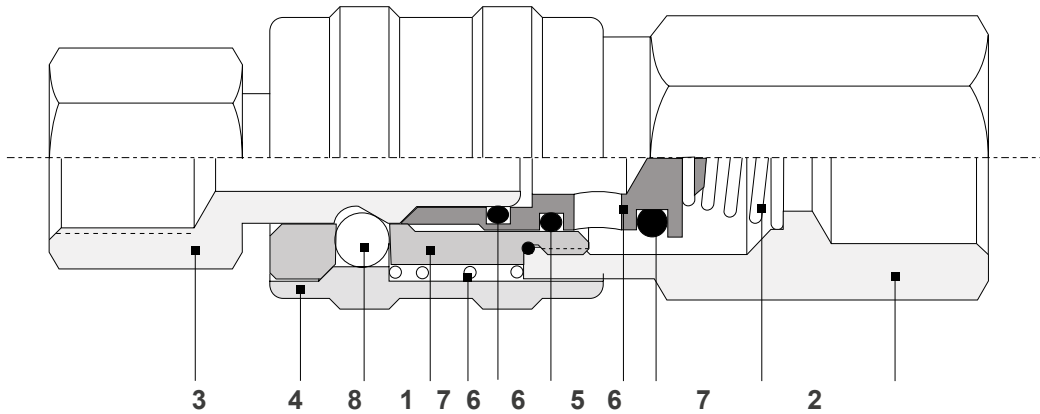


1/4"	8231	45.00	13/16"	25.00	
5/16"	8232	45.00	13/16"	25.00	
3/8"	8233	45.00	13/16"	25.00	



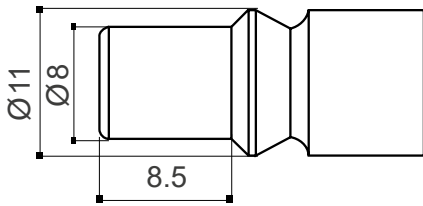
1/4 BSP	8250	60.00	7/8"	25.00	M18
---------	-------------	-------	------	-------	-----

DATOS TÉCNICOS



- 1- Cuerpo Principal (Latón niquelado)
- 2- Cuerpo Inferior (Latón niquelado)
- 3- Conector (Acero tratado termicamente y zincado)
- 4- Buje Móvil (Acero zincado)
- 5- Válvula (Acero tratado termicamente y zincado)
- 6- Sellos (Nitrilo)
- 7- Resortes (Acero inoxidable)
- 8- Bolillas (Acero inoxidable)

CONECTORES SERIE 8000



Características

- Acero zincado anticorrosivo
- Tratados termicamente
- Alta resistencia al uso
- Compatible with: ARO 210 STD

Descripción	F	Código	A	B	C	Fl
<p>Rosca Hembra</p>	1/8 BSP	8211	38.00	9/16"	10.00	
	1/4 BSP	8212	39.00	5/8"	12.00	
	3/8 BSP	8213	41.00	13/16"	14.00	
<p>Rosca Macho</p>	1/8 BSPT	8218	39.00	1/2"	9.00	
	1/4 BSPT	8219	42.00	9/16"	12.00	
	3/8 BSPT	8220	44.00	11/16"	14.00	
<p>Racord para Manguera</p>	1/4"	8214	51.00	1/2"	22.00	
	5/16"	8215	51.00	1/2"	22.00	
	3/4"	8216	51.00	1/2"	22.00	
	3/4"	8217	51.00	9/16"	22.00	
<p>Conexión tubo Plástico</p>	1/4"	8255	30.00	9/16"	92.00	
	5/16"	8256	30.00	9/16"	98.00	
	3/8"	8257	30.00	11/16"	110.00	