

SERIE 8500

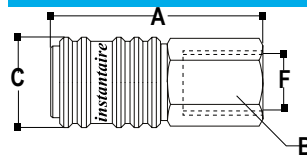


Pasaje 5,5 mm

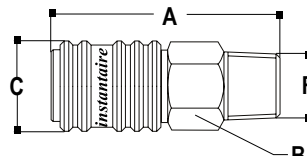
Características

- Cuerpo de bronce niquelado
- Buje móvil de acero zincado
- Resortes y bolillas de acero inoxidable
- Juntas de Nitrilo (-30°C a 120°C)
- Presión de servicio 20 bars
- Acoplamiento automático
- Pasaje 5,50 mm.
- Conectores de bronce niquelado

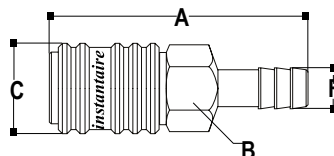
Descripción



Rosca Hembra



Rosca Macho

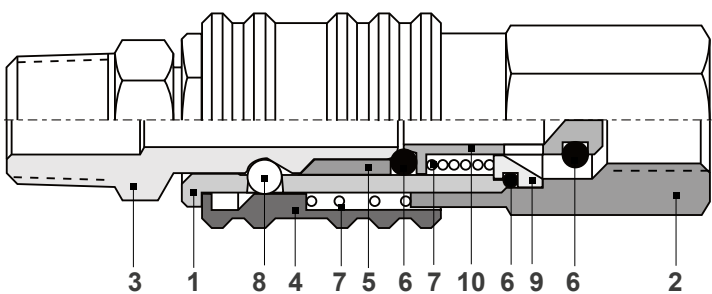


Racord para Manguera

F	Código	A	B	C	FI
1/8 BSP	<b>8501</b>	57.00	13/16"	25.00	
1/4 BSP	<b>8502</b>	57.00	13/16"	25.00	
3/8 BSP	<b>8503</b>	59.00	13/16"	25.00	

1/8 BSPT	<b>8508</b>	23.00	13/16"	25.00	
1/4 BSPT	<b>8509</b>	56.00	13/16"	25.00	
3/8 BSPT	<b>8510</b>	58.00	13/16"	25.00	

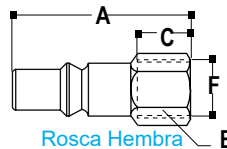
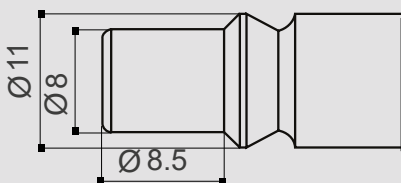
1/4"	<b>8504</b>	67.00	13/16"	25.00	
5/16"	<b>8505</b>	67.00	13/16"	25.00	
3/8"	<b>8506</b>	67.00	13/16"	25.00	
1/2"	<b>8507</b>	67.00	13/16"	25.00	



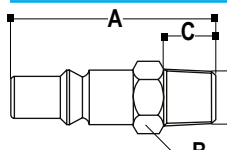
- 1- Cuerpo Principal (Bronce niquelado)
- 2- Cuerpo Inferior (Bronce niquelado)
- 3- Conector Macho (Bronce niquelado)
- 4- Cuerpo Móvil (Bronce niquelado)
- 5- Buje Guía (Bronce niquelado)
- 6- O'rings (Nitrilo)
- 7- Resortes (Acero inoxidable)
- 8- Bolillas de Anclaje (Acero inoxidable)
- 9- Asiento de Válvula (Bronce)
- 10- Válvula (Bronce)

Intercambiabilidad

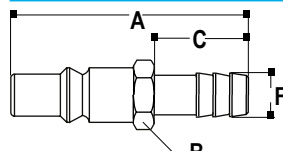
- Compatibles con: ARO 210 STD



Rosca Hembra



Rosca Macho



Racord para Manguera

1/8 BSP	<b>8511</b>	38.00	9/16"	10.00	
1/4 BSP	<b>8512</b>	39.00	5/8"	12.00	
3/8 BSP	<b>8513</b>	41.00	13/16"	14.00	

1/8 BSP	<b>8518</b>	39.00	1/2"	9.00	
1/4 BSP	<b>8519</b>	42.00	9/16"	12.00	
3/8 BSP	<b>8520</b>	44.00	11/16"	14.00	

1/4	<b>8514</b>	51.00	1/2"	22.00	
5/16	<b>8515</b>	51.00	1/2"	22.00	
3/8	<b>8516</b>	51.00	1/2"	22.00	
1/2	<b>8517</b>	51.00	9/16"	22.00	