

SERIE 8700

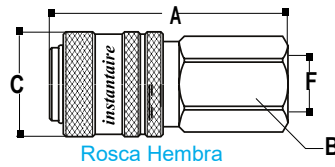


Pasaje 7,5 mm

Características

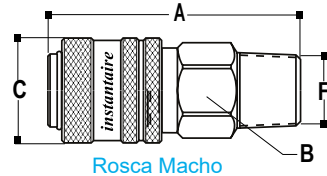
- Cuerpo de bronce niquelado
- Bujes móviles de acero zincado
- Resortes y bolillas de acero inoxidable
- Juntas de Nitrilo (-30°C a 120°C)
- Presión de servicio 20 bars
- Acoplamiento automático
- Pasaje 7,5 mm.
- Conectores de bronce niquelado

Descripción



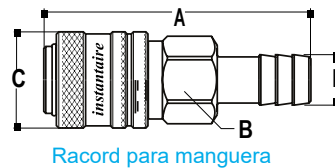
Rosca Hembra

F	Código	A	B	C	FI
1/4 BSP	<b>8702</b>	53.00	3/4"	23.00	
3/8 BSP	<b>8703</b>	55.00	3/4"	23.00	
1/2 BSP	<b>8704</b>	57.00	3/4"	23.00	



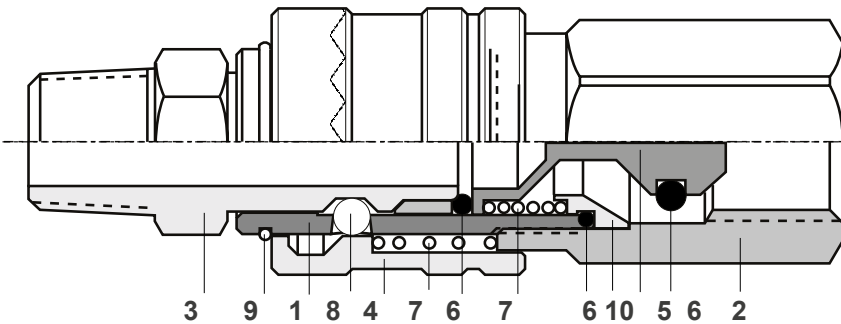
Rosca Macho

1/4 BSPT	<b>8709</b>	53.00	3/4"	23.00	
3/8 BSPT	<b>8710</b>	56.00	3/4"	23.00	
1/2 BSPT	<b>8711</b>	54.00	7/8"	23.00	



Racord para manguera

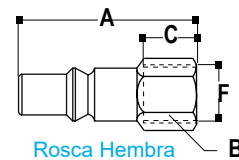
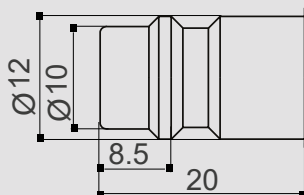
1/4"	<b>8705</b>	66.00	3/4"	23.00	
5/16"	<b>8706</b>	66.00	3/4"	23.00	
3/8"	<b>8707</b>	66.00	3/4"	23.00	
1/2"	<b>8708</b>	66.00	3/4"	23.00	



- 1- Cuerpo Principal (Bronce niquelado)
- 2- Cuerpo Inferior (Bronce niquelado)
- 3- Conector Macho (Bronce niquelado)
- 4- Cuerpo Móvil (Bronce niquelado)
- 5- Válvula (Bronce niquelado)
- 6- O'rings (Nitrilo)
- 7- Resortes (Acero inoxidable)
- 8- Bolillas de Anclaje (Acero inoxidable)
- 9- Seguro de Cuerpo (Acero inoxidable)
- 10- Asiento de Válvula (Bronce)

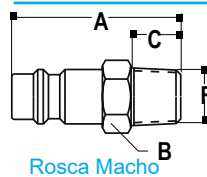
Intercambiabilidad

- Rectus 25, Rectus 26, Cejin 320, Prevost ESC07, Legris Serie 25, Oetiker Serie C/C1 y otras marcas europeas.



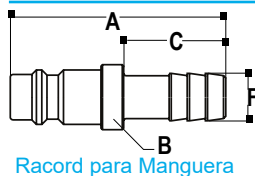
Rosca Hembra

1/4 BSP	<b>8712</b>	33.00	11/16"	12.00	
3/8 BSP	<b>8713</b>	37.00	3/4"	14.00	
1/2 BSP	<b>8714</b>	39.00	3/4"	16.00	



Rosca Macho

1/4 BSP	<b>8719</b>	37.00	9/16"	12.00	
3/8 BSP	<b>8720</b>	41.00	11/16"	14.00	
1/2 BSP	<b>8721</b>	44.00	7/8"	16.00	



Racord para Manguera

1/4"	<b>8715</b>	47.50	9/16"	22.00	
5/16"	<b>8716</b>	47.50	9/16"	22.00	
3/8"	<b>8717</b>	47.50	9/16"	22.00	
1/2"	<b>8718</b>	47.50	5/8"	22.00	