

SERIE 2000

LÍNEA MOLDES



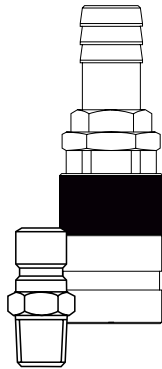
Pasaje 9,0 mm



Descripción	F	Pasaje Libre	Válvula Simple	Válvula Doble	A	B	C
<p>Rosca Hembra</p>	1/4 BSP	2120	2220	2320	58.00	11/16"	23.00
	3/8 BSP	2121	2221	2321	58.00	13/16"	23.00
<p>Rosca Macho</p>	1/4 BSPT	2125	2225	2325	57.00	11/16"	23.00
	3/8 BSPT	2126	2226	2326	61.00	3/4"	23.00
	1/2 BSPT	2127	2227	2327	63.00	13/16"	23.00
<p>Racord para Manguera</p>	3/8"	2100	2200	2300	68.00	5/8"	23.00
	1/2"	2105	2205	2305	68.00	5/8"	23.00
<p>Racord para Manguera 45°</p>	3/8"	2114	2214	2314	78.00	3/4"	23.00
	1/2"	2115	2215	2315	78.00	3/4"	23.00
<p>Racord para Manguera 90°</p>	3/8"	2109	2209	2309	62.00	3/4"	23.00
	1/2"	2110	2210	2310	62.00	3/4"	23.00
<p>Conexión Tubo Plástico</p>	3/8"	2130	2230	2330	47.00	3/4"	23.00
	1/2"	2135	2235	2335	48.00	7/8"	23.00
<p>Montaje en Panel</p>	1/4 BSP	2140	2240	2340	64.00	11/16"	23.00

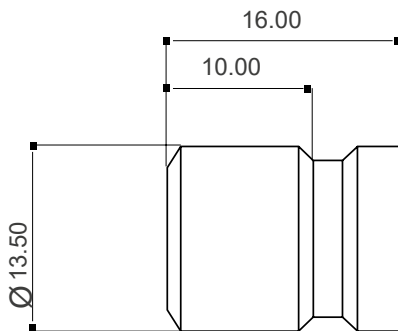
Características

- Totalmente en bronce niquelado
- Resortes y bolillas de acero inoxidable
- Juntas de Nitrilo
- Presión de servicio: 16 bars
- Pasaje 9 mm.
- Aptos para líquidos y gases
- Ideales para cambio rápido de matríces.



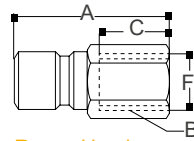
Los conectores con válvula (2635-2640-2645) son compatibles únicamente con los acoplamiento rápido "Válvula Doble" 23.

Sistema Americano



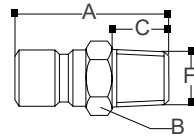
Conectores SERIE 2000

Descripción



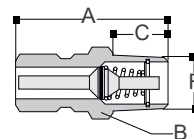
Rosca Hembra

F	Código	A	B	C
1/8 BSP	2400	28.00	9/16"	9.00
1/4 BSP	2405	31.00	5/8"	11.00
3/8 BSP	2410	34.00	11/16"	14.00
1/2 BSP	2415	38.00	1"	16.00



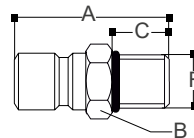
Rosca Macho

1/8 BSPT	2519	31.00	9/16"	9.00
1/4 BSPT	2520	33.00	9/16"	11.00
3/8 BSPT	2525	37.00	11/16"	14.00
1/2 BSPT	2530	39.00	7/8"	16.00



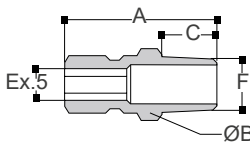
Rosca Macho c/valv.

1/4 BSPT	2635	33.00	9/16"	11.00
3/8 BSPT	2640	37.00	11/16"	14.00
1/2 BSPT	2645	39.00	7/8"	16.00



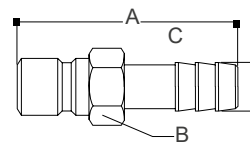
Rosca Macho c/sello

1/4 BSP	2660	33.00	9/16"	11.00
3/8 BSP	2665	37.00	11/16"	14.00
1/2 BSP	2670	39.00	7/8"	16.00



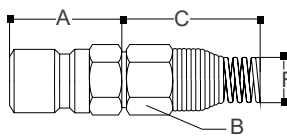
Rosca Macho ex.inter.

1/4 BSPT	2675	33.00	9/16"	11.00
3/8 BSPT	2680	37.00	11/16"	14.00
1/2 BSPT	1670	39.00	7/8"	16.00



Racord para Manguera

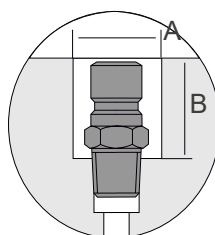
3/8"	2650	43.00	9/16"	43.00
1/2"	2655	43.00	9/16"	43.00



Conex. Tubo Plástico

3/8"	2760	21.00	3/4"	150.00
1/2"	2765	23.00	7/8"	180.00

Información para el montaje de los conectores



Montaje Interno

Código	A	B
2519	25.00	25.00
2520	25.00	27.00
2525	25.00	28.50
2530	25.00	31.50