

SERIE 3000

LÍNEA MOLDES



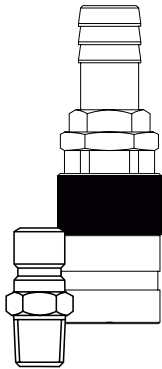
Pasaje 15,0 mm



Descripción	F	Pasaje Libre	Válvula Simple	Válvula Doble	A	B	C
<p>Rosca Hembra</p>	1/2 BSP	3120	3220	3320	83.00	1"1/18	33.00
	3/4 BSP	3121	3221	3321	86.00	1"1/14	33.00
<p>Rosca Macho</p>	1/2 BSPT	3125	3225	3325	79.00	1"	33.00
	3/4 BSPT	3126	3226	3326	83.00	1"1/4	33.00
<p>Racord para Manguera</p>	5/8"	3104	3204	3304	94.00	1"	33.00
	3/4"	3105	3205	3305	94.00	1"	33.00
<p>Racord para Manguera 45°</p>	5/8"	3114	3214	3314	111.00	1"	33.00
	3/4"	3115	3215	3315	111.00	1"	33.00
<p>Racord para Manguera 90°</p>	5/8"	3109	3209	3309	85.00	1"	33.00
	3/4"	3110	3210	3310	85.00	1"	33.00
<p>Conexión Tubo Plástico</p>	1/2"	3130	3230	3330	79.00	1"	33.00
<p>Montaje en Panel</p>	1/2 BSP	3135	3235	3335	92.00	1"1/4	33.00

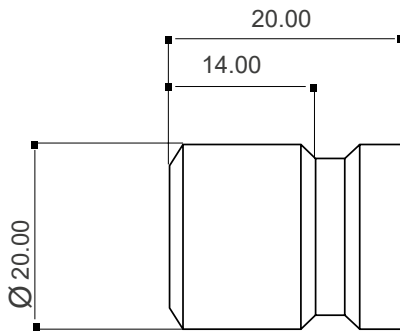
Características

- Totalmente en bronce niquelado
- Resortes y bolillas de acero inoxidable
- Juntas de Nitrilo
- Presión de servicio: 16 bars
- Pasaje 15 mm.
- Aptos para líquidos y gases
- Ideales para cambio rápido de matríces.

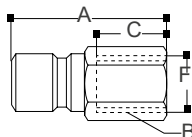
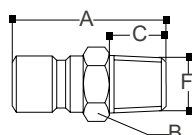
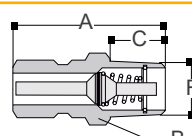
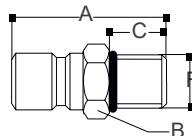
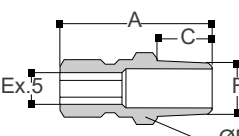
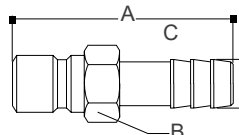
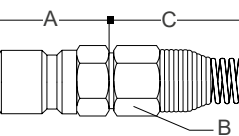


Los conectores con válvula (3625-3630) son compatibles únicamente con los acoplamiento rápido "Válvula Doble" 33.

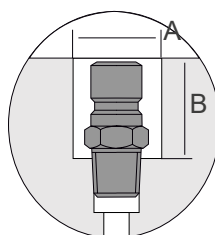
Sistema Americano



Conectores SERIE 3000

Descripción	F	Código	A	B	C
 Rosca Hembra	1/2 BSP	3405	45.00	1"1/8	19.00
	3/4 BSP	3410	47.00	1"1/4	21.00
 Rosca Macho	1/2 BSPT	3515	43.00	7/8"	16.00
	3/4 BSPT	3520	46.00	1"1/8	19.00
 Rosca Macho c/válv.	1/2 BSPT	3625	43.00	7/8"	16.00
	3/4 BSPT	3630	46.00	1"1/8	19.00
 Rosca Macho c/sello	1/2 BSP	3640	43.00	7/8"	16.00
	3/4 BSP	3645	46.00	1"1/8	19.00
 Rosca Macho ex.inter.	1/2 BSPT	3650	43.00	7/8"	16.00
	3/4 BSPT	3655	46.00	1"1/8	19.00
 Racord para Manguera	1/2"	3735	53.00	7/8"	31.00
	5/8"	3736	57.00	7/8"	31.00
	3/4"	3740	57.00	7/8"	31.00
 Conex. Tubo Plástico	1/2"	3745	30.00	7/8"	180.00

Información para el montaje de los conectores



Montaje Interno

Código	A	B
3515	32.00	38.00
3520	38.00	39.00